

Met-Therm™ - MC965

WARM ROOFING DETAILS

STANDARD INSTALLATION DETAILS, IF INTERNAL SPREAD OF FLAME IS REQUIRES REFER BRANZ TEST REPORT AND OPINION.
REQUIRED SIGN OFF FROM FIRE ENGINEER

DETAIL LIST		Revision	Date
D 00 / 13	COVER SHEET		
D 01 / 13	RIDGE WITH PROFILED APEX	1.0	OCT 2024
D 02 / 13	RIDGE WITH NON PROFILED APEX	1.0	OCT 2024
D 03 / 13	SAWTOOTH RIDGE	1.0	OCT 2024
D 04 / 13	INTERNAL GUTTER	1.0	OCT 2024
D 05 / 13	FLUSH EAVE WITH EXTERNAL GUTTER BRACKET	1.0	OCT 2024
D 06 / 13	BARGE WITH PROFILED CLADDING	1.0	OCT 2024
D 07 / 13	PARAPET WITH TRANSVERSE APRON	1.0	OCT 2024
D 08 / 13	PARALLEL APRON	1.0	OCT 2024
D 09 / 13	ROOF STEP	1.0	OCT 2024
D 10 / 13	COLD PIPE PENETRATION	1.0	OCT 2024
D 11 / 13	SKYLIGHT PENETRATION 01	1.0	OCT 2024
D 12 / 13	SKYLIGHT PENETRATION 02	1.0	OCT 2024
D 13 / 13	TYPICAL CROSS SECTION	1.0	OCT 2024

PRE-FINISHED RIDGE CAP FLASHING

STOPENDS TO ROOF CLADDING

METALCRAFT MC965 ROOFING

NOTCHED EDGE DRESSED OVER MC965 RIBS

* MC965 MIN. ROOF PITCH = 3°

FIRE RETARDANT FOAM INFILL (EXPANDING FOAM)

MET-THERM® Batten WITH VENTILATION HOLES

PRO CLIMA TESCON NAIDECK TAPE

UNDERLAY FULLY TAPED REFER NOTE

PRE-FINISHED SELF DRILLING/TAPPING SCREW ON EMBOSSED WASHER

FOAM CLOSURE SEALED TOP AND BOTTOM WITH BOSTIK FIRECAULK SEALANT

PRE-FINISHED SCREW WITH NEOPRENE WASHER

STRUCTURAL DESIGN BY OTHERS
MINIMUM PURLIN WIDTH = 90mm

*PIR BOARD INSULATION REFER NOTE

METALCRAFT MC965 ROOFING REVERSE LAID AND TAPED LAPS

0.55 BMT STEEL FLASHING CONTINUOUS

AS PER MRM CODE OF PRACTICE

CATEGORY A	CATEGORY B	CATEGORY C	CATEGORY D
LOW, MEDIUM OR HIGH WIND ZONES - ALL ROOF PITCHES VERY HIGH AND EXTRA HIGH WIND ZONES WHERE THE PITCH IS EQUAL TO OR GREATER THAN 10°	VERY HIGH WIND ZONES ROOF PITCH <8° EXTRA HIGH WIND ZONES -ALL ROOF PITCHES	SED WIND ZONES UP TO 60 m/s ALL ROOF PITCH	SED WIND ZONES UP TO 68 m/s ALL ROOF PITCH
X MIN. 130mm	MIN. 200mm	MIN. 200mm	MIN. 200mm + BAFFLE (REFER NZ MRM COP)

*FOR PIR BOARD & UNDERLAY OPTIONS REFER TO BUILDING PRODUCT INFORMATION SHEET (BPIS)
WWW.METALCRAFTGROUP.CO.NZ

PRE-FINISHED RIDGE CAP FLASHING

* MC965 MIN. ROOF PITCH = 3°

STOPENDS TO ROOF CLADDING

METALCRAFT MC965
ROOFING

NOTCHED EDGE
DRESSED OVER
MC965 RIBS

FIRE RETARDANT
FOAM INFILL
(EXPANDING FOAM)

MET-THERM® Batten
WITH VENTILATION
HOLES

PRO CLIMA TESCON
NAIDECK TAPE

UNDERLAY FULLY
TAPED REFER NOTE

PRE-FINISHED SELF
DRILLING/TAPPING SCREW
ON EMBOSSED WASHER

FOAM CLOSURE SEALED TOP
AND BOTTOM WITH BOSTIK
FIRECAULK SEALANT

PRE-FINISHED SCREW WITH
NEOPRENE WASHER

STRUCTURAL DESIGN BY OTHERS
MINIMUM PURLIN WIDTH = 90mm

*PIR BOARD INSULATION
REFER NOTE

METALCRAFT MC965
ROOFING REVERSE
LAID AND TAPED
LAPS

0.55 BMT STEEL
FLASHING
CONTINUOUS

AS PER MRM CODE OF PRACTICE

	CATEGORY A	CATEGORY B	CATEGORY C	CATEGORY D
	LOW, MEDIUM OR HIGH WIND ZONES - ALL ROOF PITCHES	VERY HIGH WIND ZONES ROOF PITCH <8°	SED WIND ZONES UP TO 60 m/s	SED WIND ZONES UP TO 68 m/s
	VERY HIGH AND EXTRA HIGH WIND ZONES WHERE THE PITCH IS EQUAL TO OR GREATER THAN 10°	EXTRA HIGH WIND ZONES -ALL ROOF PITCHES	ALL ROOF PITCH	ALL ROOF PITCH
X	MIN. 130mm	MIN. 200mm	MIN. 200mm	MIN. 200mm + BAFFLE (REFER NZ MRM COP)

*FOR PIR BOARD & UNDERLAY OPTIONS REFER TO BUILDING PRODUCT INFORMATION SHEET (BPIS)
WWW.METALCRAFTGROUP.CO.NZ

Metalcraft
Roofing
www.metalcraftgroup.co.nz

DISCLAIMER:
These drawings are the copyright of Metalcraft Roofing and all details are to be used for indicative purposes only. The Architect / Designer should consult all of Metalcraft Roofing's MET-THERM® product literature and also the NZMRM code of practice and all relevant building codes. The Architect/ Designer must satisfy themselves that the chosen MET-THERM® system and relevant details are suitable for their specific project. Metalcraft Roofing reserves the right to alter or upgrade these details at any time without prior notice.

RIDGE WITH NON PROFILED APEX
WARM ROOFING DETAILS

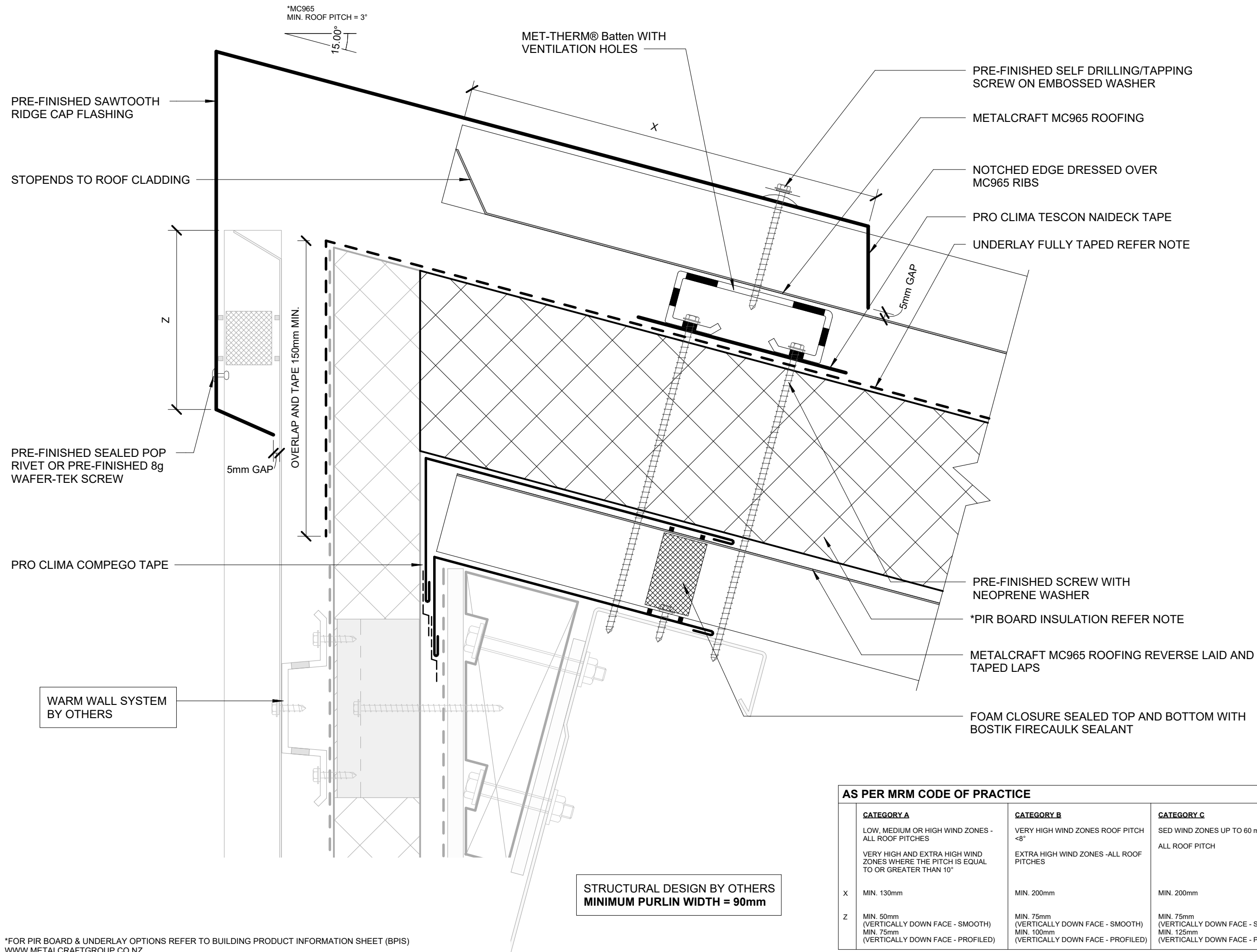
Met-Therm™ - Espan® 340 on Metcom 7 Rev. 1.0

Reference CRMTMC965

Date OCT 2024

Scale 1 : 2

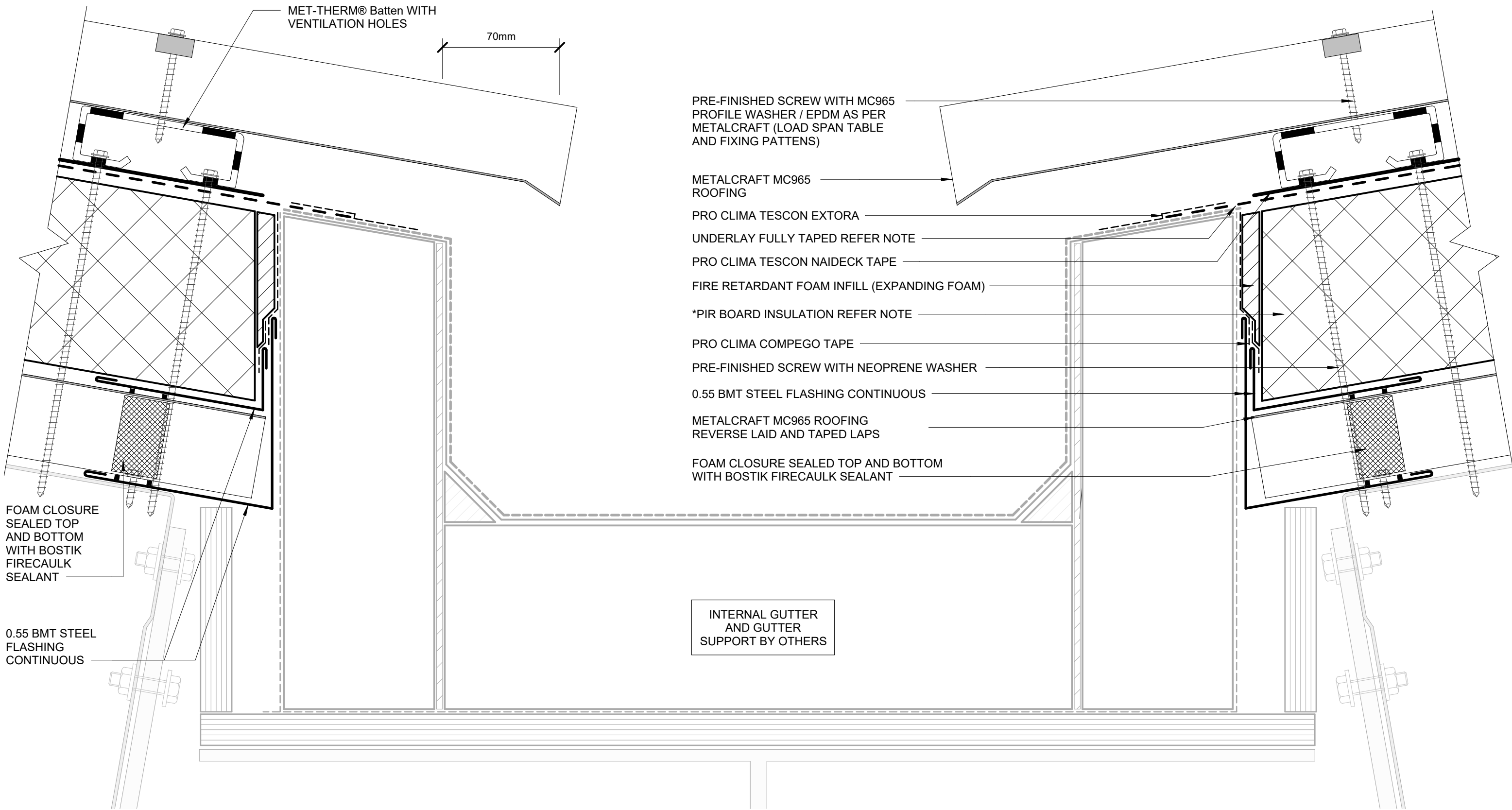
Sheet **D 02 / 13**



*FOR PIR BOARD & UNDERLAY OPTIONS REFER TO BUILDING PRODUCT INFORMATION SHEET (BPIS)
WWW.METALCRAFTGROUP.CO.NZ

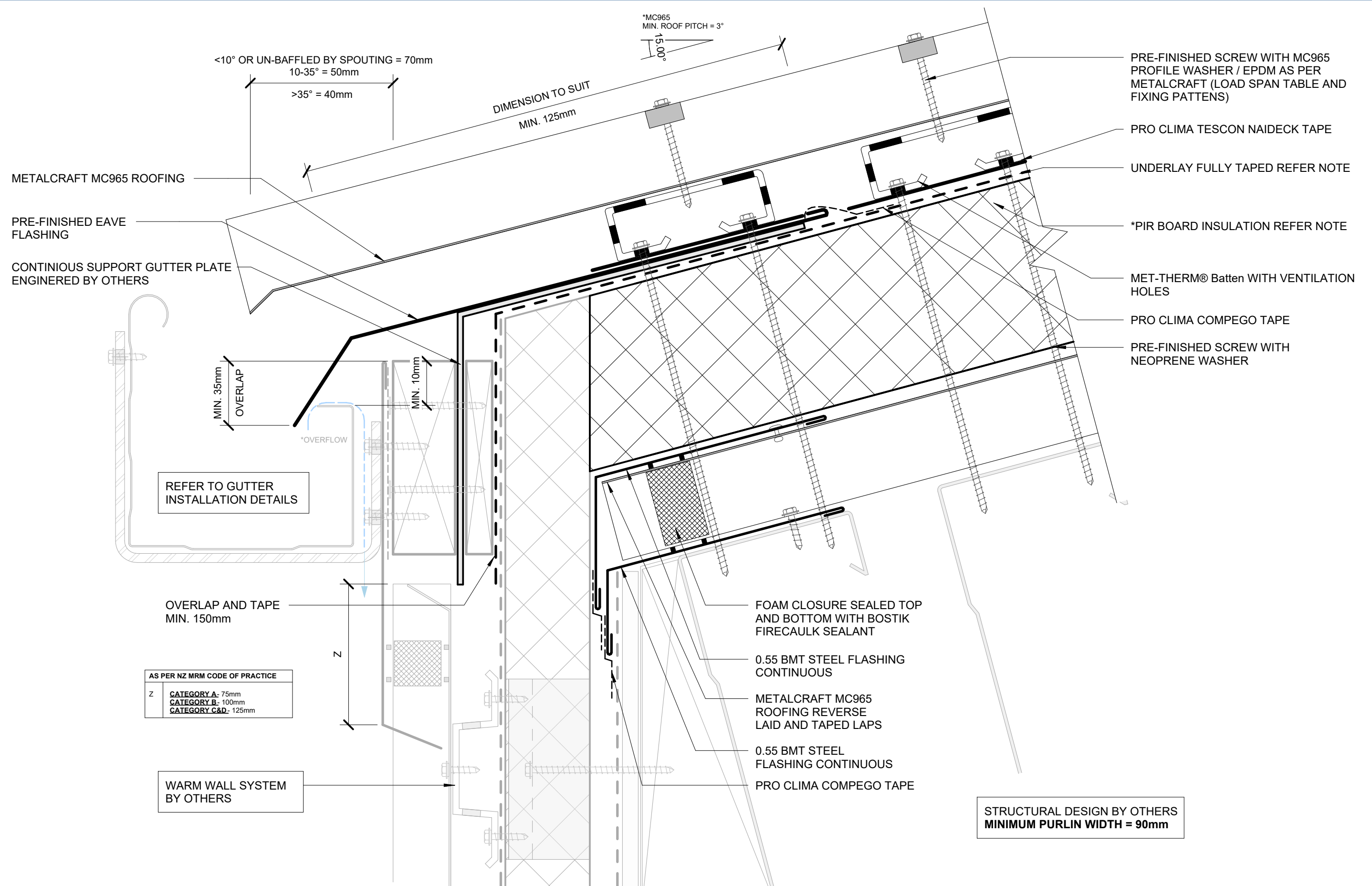
DISCLAIMER:
These drawings are the copyright of Metalcraft Roofing and all details are to be used for indicative purposes only. The Architect / Designer should consult all of Metalcraft Roofing's MET-THERM® product literature and also the NZMRM code of practice and all relevant building codes. The Architect/ Designer must satisfy themselves that the chosen MET-THERM® system and relevant details are suitable for their specific project. Metalcraft Roofing reserves the right to alter or upgrade these details at any time without prior notice.

AS PER MRM CODE OF PRACTICE				
	<u>CATEGORY A</u>	<u>CATEGORY B</u>	<u>CATEGORY C</u>	<u>CATEGORY D</u>
	LOW, MEDIUM OR HIGH WIND ZONES - ALL ROOF PITCHES VERY HIGH AND EXTRA HIGH WIND ZONES WHERE THE PITCH IS EQUAL TO OR GREATER THAN 10°	VERY HIGH WIND ZONES ROOF PITCH <8° EXTRA HIGH WIND ZONES -ALL ROOF PITCHES	SED WIND ZONES UP TO 60 m/s ALL ROOF PITCH	SED WIND ZONES UP TO 68 m/s ALL ROOF PITCH
X	MIN. 130mm	MIN. 200mm	MIN. 200mm	MIN. 200mm + BAFFLE (REFER NZ MRM COP)
Z	MIN. 50mm (VERTICALLY DOWN FACE - SMOOTH) MIN. 75mm (VERTICALLY DOWN FACE - PROFILED)	MIN. 75mm (VERTICALLY DOWN FACE - SMOOTH) MIN. 100mm (VERTICALLY DOWN FACE - PROFILED)	MIN. 75mm (VERTICALLY DOWN FACE - SMOOTH) MIN. 125mm (VERTICALLY DOWN FACE - PROFILED)	MIN. 75mm (VERTICALLY DOWN FACE - SMOOTH) MIN. 125mm (VERTICALLY DOWN FACE - PROFILED)



*FOR PIR BOARD & UNDERLAY OPTIONS REFER TO BUILDING PRODUCT INFORMATION SHEET (BPIS)
WWW.METALCRAFTGROUP.CO.NZ

DISCLAIMER:
These drawings are the copyright of Metalcraft Roofing and all details are to be used for indicative purposes only. The Architect / Designer should consult all of Metalcraft Roofing's MET-THERM® product literature and also the NZMRM code of practice and all relevant building codes. The Architect/ Designer must satisfy themselves that the chosen MET-THERM® system and relevant details are suitable for their specific project. Metalcraft Roofing reserves the right to alter or upgrade these details at any time without prior notice.



*FOR PIR BOARD & UNDERLAY OPTIONS REFER TO BUILDING PRODUCT INFORMATION SHEET (BPIS)
WWW.METALCRAFTGROUP.CO.NZ

Metalcraft
Roofing
www.metalcraftgroup.co.nz

DISCLAIMER:
These drawings are the copyright of Metalcraft Roofing and all details are to be used for indicative purposes only. The Architect / Designer should consult all of Metalcraft Roofing's MET-THERM® product literature and also the NZMRM code of practice and all relevant building codes. The Architect/ Designer must satisfy themselves that the chosen MET-THERM® system and relevant details are suitable for their specific project. Metalcraft Roofing reserves the right to alter or upgrade these details at any time without prior notice.

FLUSH EAVE WITH EXTERNAL GUTTER BRACKET

Met-Therm™ - Espan® 340 on Metcom 7 Rev. 1.0

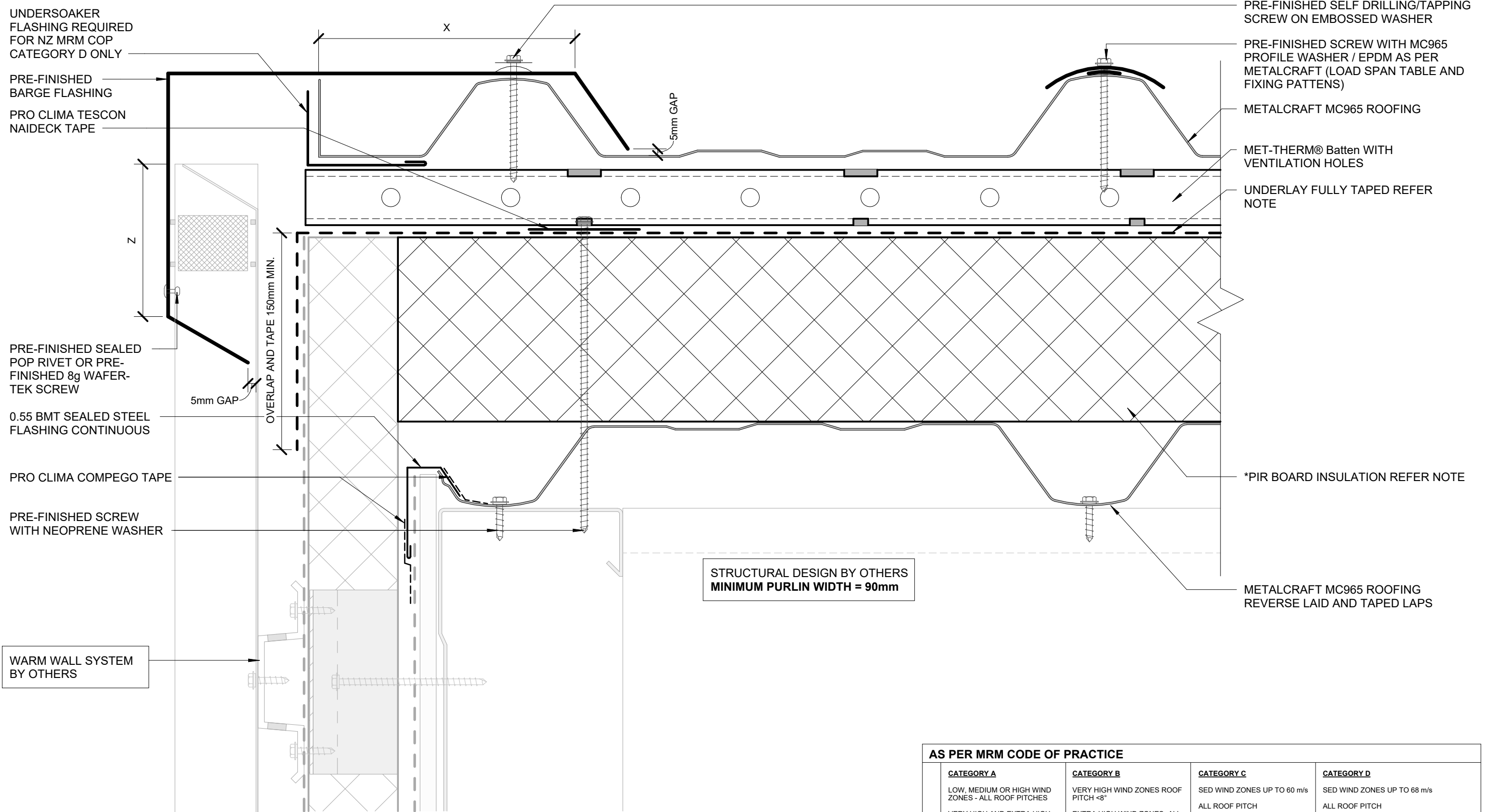
WARM ROOFING DETAILS

Reference CRMTMC965

Date OCT 2024

Scale 1 : 2

Sheet **D 05 / 13**

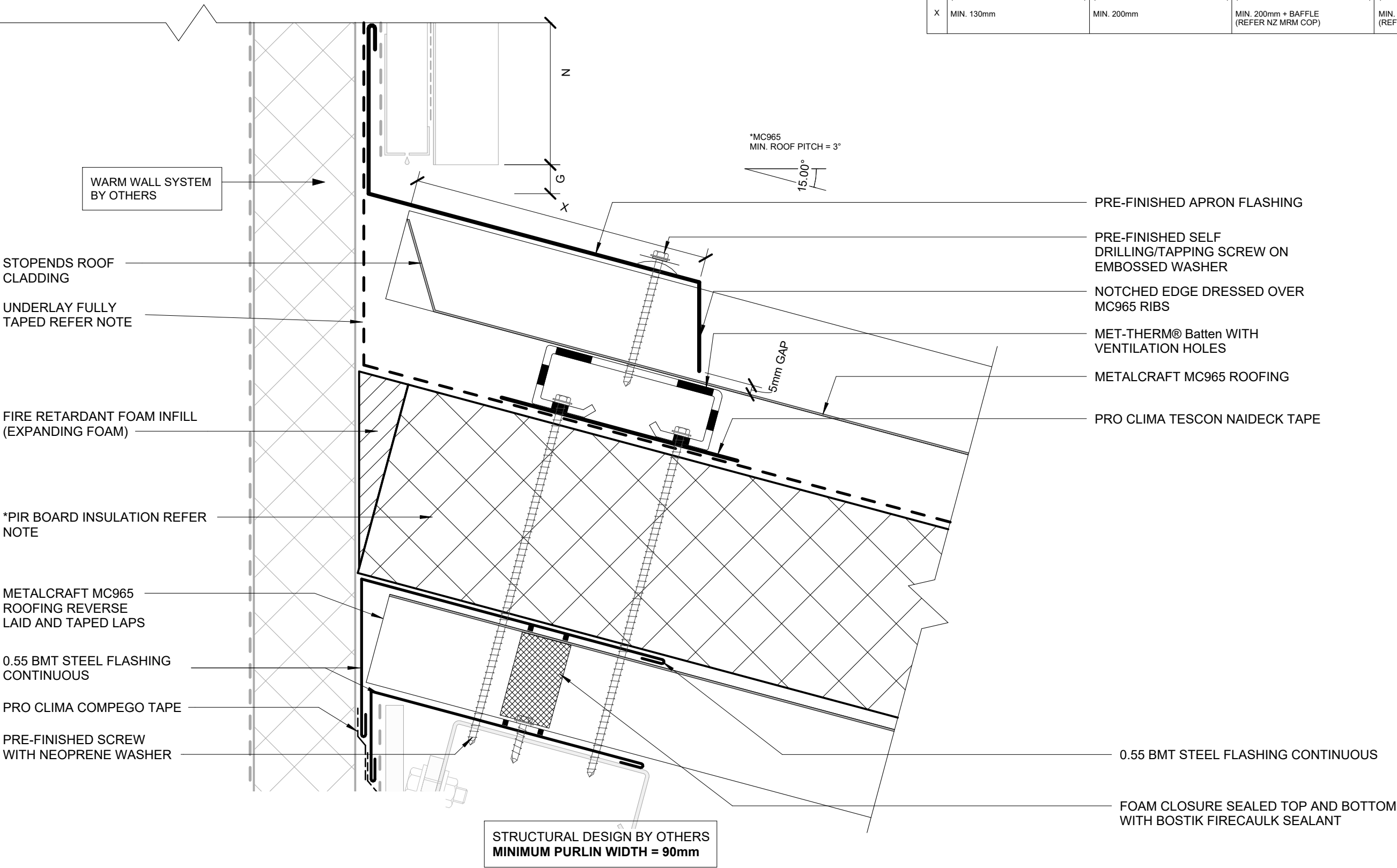


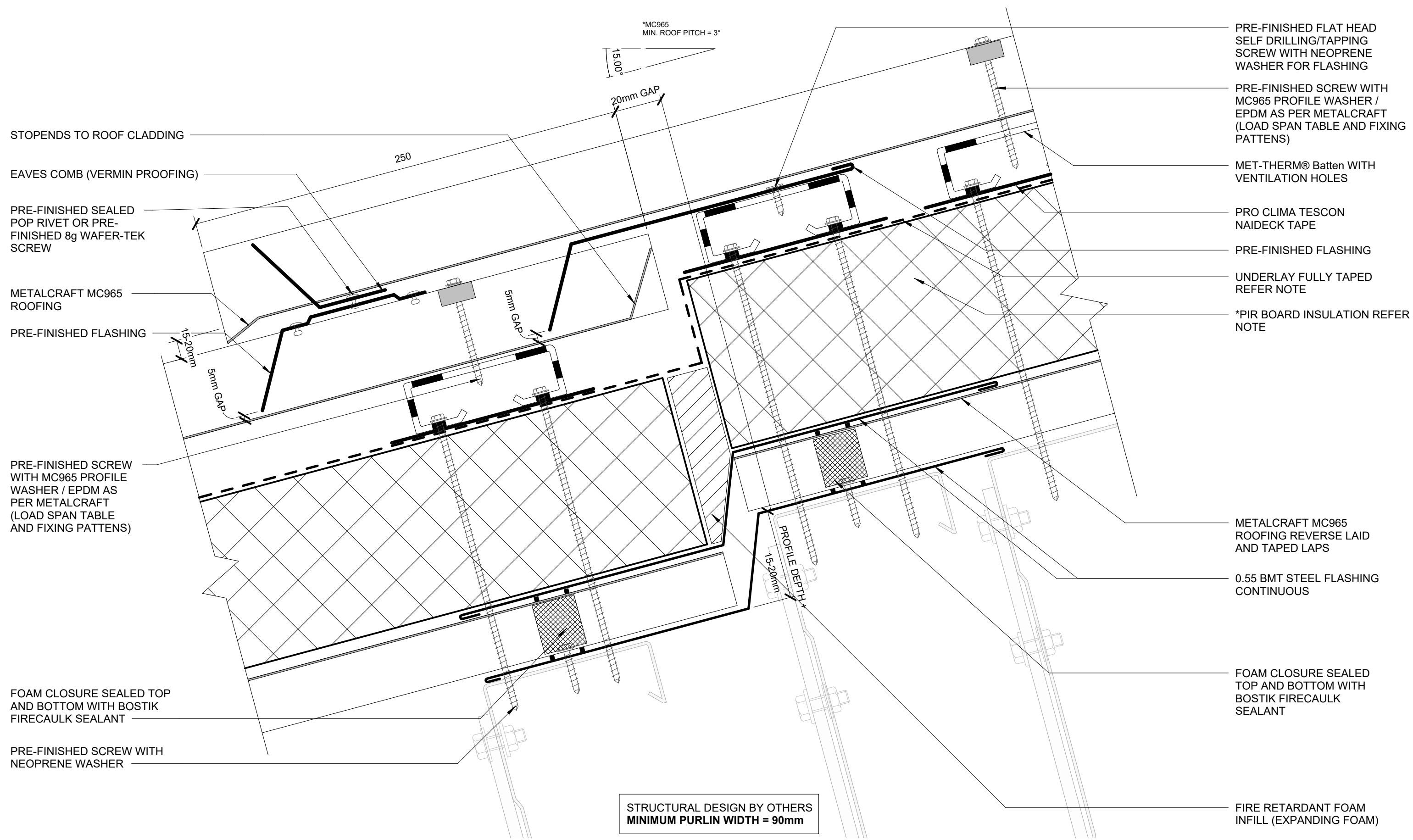
*FOR PIR BOARD & UNDERLAY OPTIONS REFER TO BUILDING PRODUCT INFORMATION SHEET (BPIS)
WWW.METALCRAFTGROUP.CO.NZ

AS PER MRM CODE OF PRACTICE			
CATEGORY A	CATEGORY B	CATEGORY C	CATEGORY D
LOW, MEDIUM OR HIGH WIND ZONES - ALL ROOF PITCHES	VERY HIGH WIND ZONES ROOF PITCH <8°	SED WIND ZONES UP TO 60 m/s	SED WIND ZONES UP TO 68 m/s
VERY HIGH AND EXTRA HIGH WIND ZONES WHERE THE PITCH IS EQUAL TO OR GREATER THAN 10°	EXTRA HIGH WIND ZONES -ALL ROOF PITCHES	ALL ROOF PITCH	ALL ROOF PITCH
X TRAPEZOIDAL & TRAY: ONE RIB CORRUGATE: 2 CORRUGATIONS	TRAPEZOIDAL & TRAY: TWO RIBS (20mm - 34mm)* ONE RIB (>34mm)* CORRUGATE: 2 CORRUGATIONS	TRAPEZOIDAL & TRAY: TWO RIBS (20mm - 34mm)* ONE RIB (>34mm)* CORRUGATE: 3 CORRUGATIONS	TRAPEZOIDAL & TRAY: TWO RIBS (20mm - 34mm)* + UNDERSOAKER ONE RIB (>34mm)* + UNDERSOAKER CORRUGATE: 2 CORRUGATIONS + UNDERSOAKER
Z MIN. 50mm (VERTICALLY DOWN FACE - SMOOTH) MIN. 75mm (VERTICALLY DOWN FACE - PROFILED)	MIN. 75mm (VERTICALLY DOWN FACE - SMOOTH) MIN. 100mm (VERTICALLY DOWN FACE - PROFILED)	MIN. 75mm (VERTICALLY DOWN FACE - SMOOTH) MIN. 125mm (VERTICALLY DOWN FACE - PROFILED)	MIN. 75mm (VERTICALLY DOWN FACE - SMOOTH) MIN. 125mm (VERTICALLY DOWN FACE - PROFILED)
* RIB HEIGHT OF PROFILE OR TURNUP			

AS PER MRM CODE OF PRACTICE

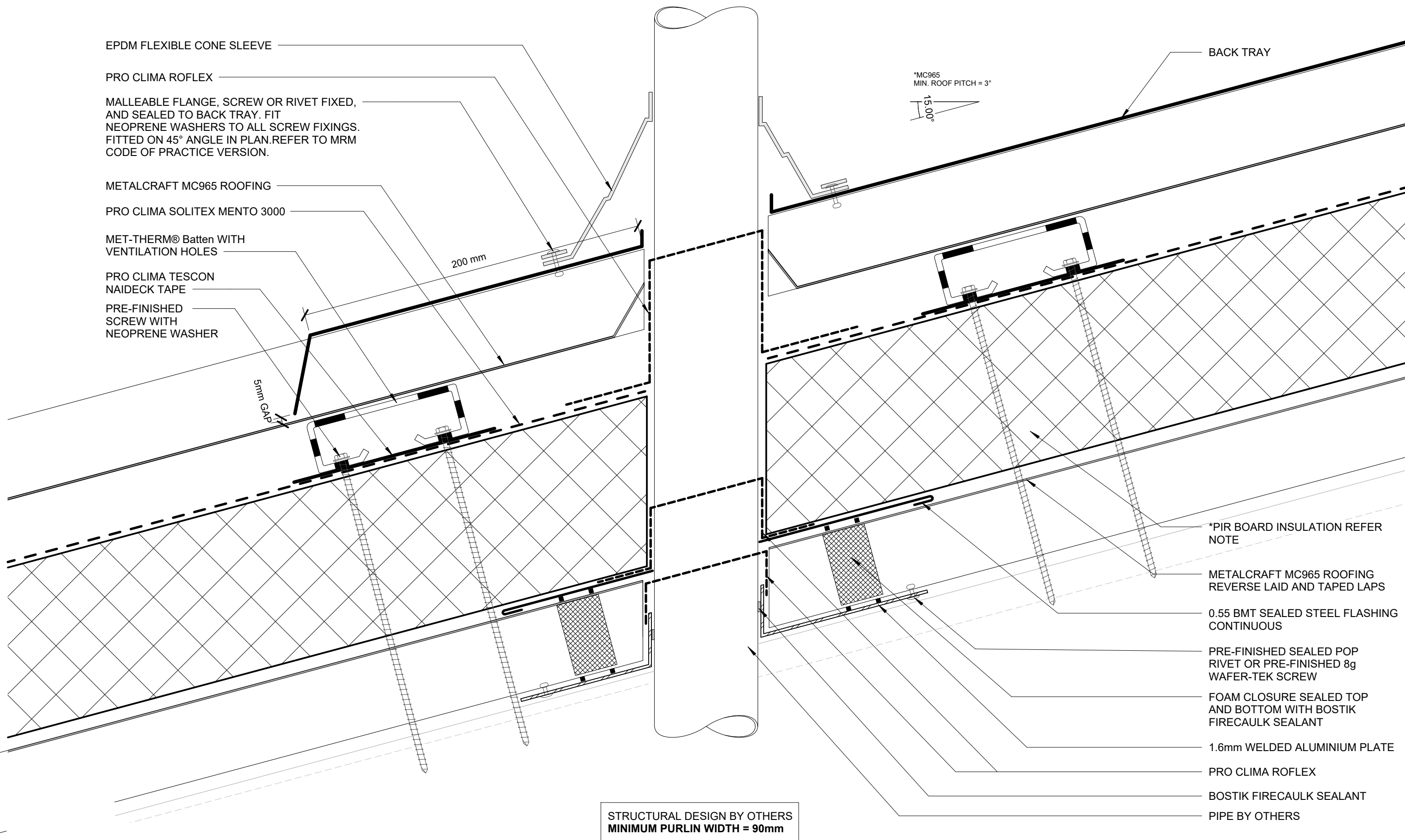
	CATEGORY A	CATEGORY B	CATEGORY C	CATEGORY D
	LOW, MEDIUM OR HIGH WIND ZONES - ALL ROOF PITCHES VERY HIGH AND EXTRA HIGH WIND ZONES WHERE THE PITCH IS EQUAL TO OR GREATER THAN 10°	VERY HIGH WIND ZONES ROOF PITCH <8° EXTRA HIGH WIND ZONES -ALL ROOF PITCHES	SED WIND ZONES UP TO 60 m/s ALL ROOF PITCH	SED WIND ZONES UP TO 68 m/s ALL ROOF PITCH
G	25mm	25mm	25mm	25mm
N	MIN. 50mm + HEM OR 75mm (VERTICALLY UP FACE - SMOOTH) MIN. 75mm + HEM OR 100mm (VERTICALLY UP FACE - PROFILED)	MIN. 75mm + HEM OR 100mm (VERTICALLY UP FACE - SMOOTH) MIN. 100mm + HEM OR 125mm (VERTICALLY UP FACE - PROFILED)	MIN. 100mm + HEM OR 125mm (VERTICALLY UP FACE - SMOOTH) MIN. 125mm + HEM (VERTICALLY UP FACE - PROFILED)	MIN. 100mm + HEM OR 125mm (VERTICALLY UP FACE - SMOOTH) MIN. 125mm + HEM (VERTICALLY UP FACE - PROFILED)
X	MIN. 130mm	MIN. 200mm	MIN. 200mm + BAFFLE (REFER NZ MRM COP)	MIN. 200mm + BAFFLE (REFER NZ MRM COP)





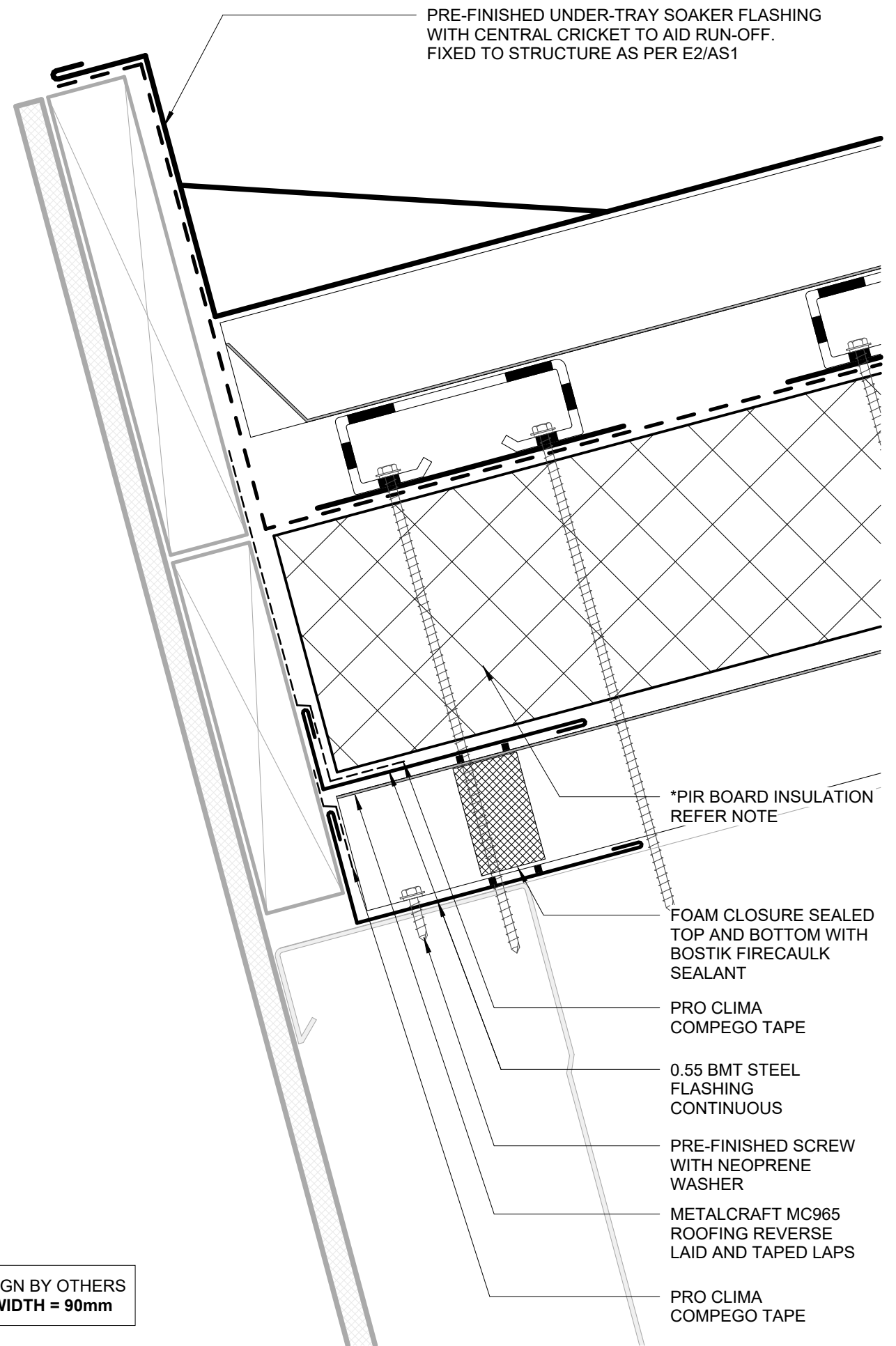
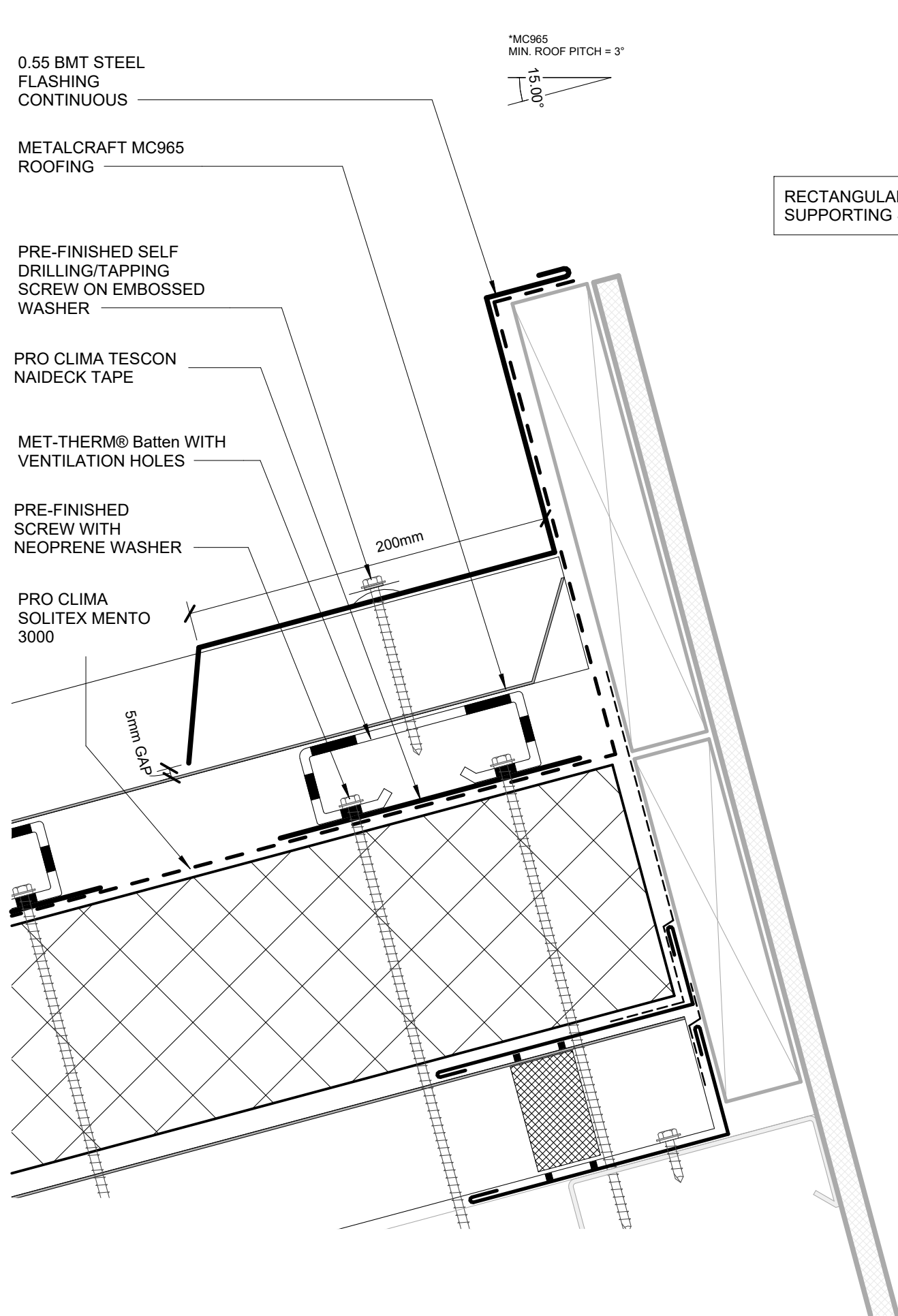
*FOR PIR BOARD & UNDERLAY OPTIONS REFER TO BUILDING PRODUCT INFORMATION SHEET (BPIS)
WWW.METALCRAFTGROUP.CO.NZ

DISCLAIMER:
These drawings are the copyright of Metalcraft Roofing and all details are to be used for indicative purposes only. The Architect / Designer should consult all of Metalcraft Roofing's MET-THERM® product literature and also the NZMRM code of practice and all relevant building codes. The Architect/ Designer must satisfy themselves that the chosen MET-THERM® system and relevant details are suitable for their specific project. Metalcraft Roofing reserves the right to alter or upgrade these details at any time without prior notice.



*FOR PIR BOARD & UNDERLAY OPTIONS REFER TO BUILDING PRODUCT INFORMATION SHEET (BPIS)
WWW.METALCRAFTGROUP.CO.NZ

DISCLAIMER:
These drawings are the copyright of Metalcraft Roofing and all details are to be used for indicative purposes only. The Architect / Designer should consult all of Metalcraft Roofing's MET-THERM® product literature and also the NZMRM code of practice and all relevant building codes. The Architect/ Designer must satisfy themselves that the chosen MET-THERM® system and relevant details are suitable for their specific project. Metalcraft Roofing reserves the right to alter or upgrade these details at any time without prior notice.



PRE-FINISHED SCREW WITH MC965
PROFILE WASHER / EPDM AS PER
METALCRAFT (LOAD SPAN TABLE AND
FIXING PATTERNS)

METALCRAFT MC965 ROOFING

MET-THERM® Batten WITH
VENTILATION HOLES

PRO CLIMA SOLITEX MENTO
3000

PRE-FINISHED SCREW
WITH NEOPRENE WASHER

PRO CLIMA TESCON
NAIDECK TAPE

PRO CLIMA COMPEGO TAPE

*PIR BOARD INSULATION
REFER NOTE

METALCRAFT MC965 ROOFING
REVERSE LAID AND TAPED LAPS

PRE-FINISHED SCREW WITH MC965
PROFILE WASHER / EPDM AS PER
METALCRAFT (LOAD SPAN TABLE AND
FIXING PATTERNS)

METALCRAFT MC965 ROOFING

MET-THERM® Batten WITH
VENTILATION HOLES

STRUCTURAL DESIGN BY OTHERS
MINIMUM PURLIN WIDTH = 90mm

*PIR BOARD INSULATION REFER
NOTE

METALCRAFT MC965 ROOFING
REVERSE LAID AND TAPED LAPS

PRE-FINISHED SCREW WITH
NEOPRENE WASHER

STRUCTURAL DESIGN BY OTHERS

PRO CLIMA COMPEGO TAPE

*FOR PIR BOARD & UNDERLAY OPTIONS REFER TO BUILDING PRODUCT INFORMATION SHEET (BPIS)
WWW.METALCRAFTGROUP.CO.NZ